

# ThermaCAM<sup>®</sup> B2

*The B2 infrared camera offers a noninvasive means of monitoring and diagnosing the condition of buildings. It provides immediate documentation of as-built or post-restoration quality, post-casualty cause and origin data, plumbing and building envelope water leakage, post-flood and fire water-damaged material assessment, energy use inefficiency, roofing, and even rodent or pest discovery.*



## **FIND PROBLEMS FAST**

Monitor and diagnose the condition of buildings quickly and view crisp thermal images on the bright 2.5" color LCD. Highlight and analyze problems, store images and document results.

## **MEASURE AND EVALUATE PROBLEMS**

Accurate temperature measurement enables you to identify and analyze problems quickly and with assurance. Detect temperature abnormalities instantly with color alarm feature.

## **RUGGED, ERGONOMIC & LIGHTWEIGHT**

Hold in your hand, clip to your belt or place in your toolbox—the B2 weighs just 1.5 lbs. It is the lightest IR and thermal imaging storage camera in the world. Dust and splash proof, the B2 meets IP 54 standards and withstands harsh industrial environments.

## **FLEXIBLE JPEG IMAGE STORAGE**

Store and recall up to 200 radiometric JPEG images in the camera's on-board memory. Recall, analyze and share your findings with others in the field using the camera's LCD or plug into an NTSC monitor.

## **PINPOINT PROBLEMS WITH PRECISION**

The built-in Laser LocatIR™ quickly helps you associate the hot spot on the IR image with the real physical target. This feature greatly enhances the ability to target inconsistencies.

## **CUSTOM LABELING FEATURE**

Custom labeling allows you to save a location name or frequently used comments with an image. Examples, "kitchen," "attic," "basement," "needs repair," and more.

## **VIEW SENSITIVE THERMAL IMAGES AT STANDARD TV RATES**

A maintenance-free, state-of-the-art uncooled FPA infrared detector produces highly accurate thermal images that allow you to detect subtle temperature variations that can signal moisture content in building materials. TV rate imaging (60 Hz) allows you to quickly scan large areas or moving targets that cannot be imaged with still shot cameras.

## **DOWNLOAD AND DOCUMENT**

Download thermal images to your PC quickly with QuickView™ software and standard USB or serial cables. Document your findings simply by inserting JPEGs into your favorite word processing programs.

## **SMART POWER MANAGEMENT**

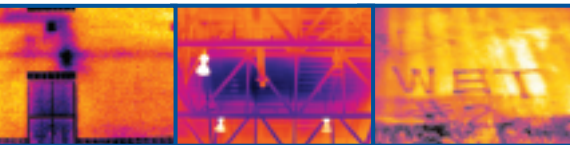
Lightweight, long life Li-Ion battery assures uninterrupted inspections. B2 includes a 2-bay intelligent charger, an internal battery charger and two batteries. Optional car/truck charger is available.

## **FAST DETECTION FOR FAST ACTION**

Instantly image entire rooms, inspect places that can't be physically reached with moisture meters, reveal wet conditions behind surfaces such as enameled walls and wallpaper that don't readily water stain, track leaks to their source, monitor the drying process, and confirm when a structure is dry.

## **AUTOMATIC DEW POINT IDENTIFICATION ALARM**

Identifies potential condensation areas where mold might occur with visible and audible alarm options. The dew point is calculated in real time as a function of air temperature and relative humidity in the room and indicates potential surfaces in the room on which condensation will occur.



- Ultra-compact
- Affordable
- Crisp, high-quality images
- Dew point & color alarm feature
- Bright 2.5" color LCD
- Built-in Laser LocatIR™
- JPEG image storage
- Download images easily to a PC
- Interchangeable lenses
- Easy-to-operate

# THERMACAM® B2 TECHNICAL SPECIFICATIONS

## IMAGING PERFORMANCE

|                                  |   |
|----------------------------------|---|
| Field of view/min focus distance | 25° X 19° / 0.3 m                               |
| Thermal sensitivity              | 0.12°C  |
| Detector type                    | Focal plane array (FPA) uncooled microbolometer |
| Spectral range                   | 7.5 to 13 µm                                    |

## IMAGE PRESENTATION

|                   |  |
|-------------------|--|
| Display           | 2.5" color LCD, 16K colors   |
| Video output      | NTSC, standard RCA composite video   |
| Image controls    | Palettes (Iron, high-contrast rainbow, B/W, B/W inv), level, span, auto adjust (continuous/manual) |
| Set-up controls   | Date/time, language (English, Spanish), info, LCD intensity (high/normal/low)                      |
| Temperature range | -20°C to +50°C (-4°F to +122°F)  |

## MEASUREMENT

|                   |   |
|-------------------|---|
| Measurement modes | Fixed spot, area max, area min, area average, color alarm above or below. |
| Dew point alarm   | Color or audible alarm  |

## IMAGE STORAGE

|                           |  |
|---------------------------|--|
| Digital storage functions | Freeze, Standard JPEG images, Radiometric JPEG images, Delete all images, Delete image, Open |
| Image storage capacity    | Approximately 200 radiometric JPEG images  |

## LASER LOCATOR™

|                |  |
|----------------|--|
| Classification | Class 2  |
| Type           | Semiconductor AlGaInP diode laser: 1mW, 635 nm (red) |

## POWER SOURCE

|                        |  |
|------------------------|--|
| Battery type           | Li-Ion   |
| Battery operating time | 1.5 hours. Display shows battery status  |
| Battery charging       | In camera, AC adapter or 12V from car with optional 12V cable. 2 bay intelligent charger included. |
| AC operation           | AC adapter, 90-260VAC, 50-60Hz/12VDC out   |
| DC operation           | 11-16 VDC  |
| Power saving           | Automatic shutdown and sleep mode (user-selectable)  |

## ENVIRONMENTAL

|  |   |
|--|---|
| Operating temperature range              | -15°C to +45°C (+5°F to 113°F)                            |
| Storage temperature range                | -40°C to +70°C (-40°F to 158°F)                           |
| Humidity                                 | Operating and storage 20% to 80%, non-condensing, IEC 359 |
| Water and dust resistant (encapsulation) | IP 54   |
| Shock                                    | 25G, IEC 68-2-29  |
| Vibration                                | 2G, IEC 68-2-6  |

## PHYSICAL CHARACTERISTICS

|                  |  |
|------------------|--|
| Weight           | < 1.5 lbs. (0.7 kg) including battery      |
| Size (L x W x H) | 265mm x 80mm x 105mm (10.4" x 3.2" x 4.1") |
| Color            | Yellow                                     |
| Tripod mounting  | Standard, 1/4" - 20                        |
| Cover case       | Plastic and rubber                         |

## INTERFACES

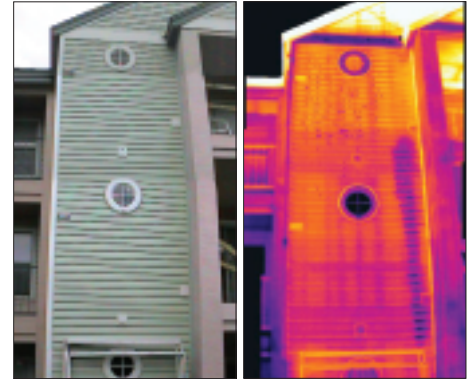
|                         |                      |
|-------------------------|----------------------|
| USB                     | Image transfer to PC |
| RS 232 cable (optional) | Image transfer to PC |

## OPTICS

|        |  |
|--------|--|
| Lenses | Fully interchangeable (standard supplied; wide angle, telephoto available) |
|--------|--|

## THERMACAM® B2 SYSTEM INCLUDES:

- IR camera with 25° FOV lens
- Ruggedized transport case
- Power supply
- Hand strap
- Lens cap
- QuickView™ software
- USB cable
- User manual
- Power cord
- 2 Batteries with 2 bay charger
- Training CD



The thermogram of this vinyl-sided 3-floor apartment house clearly shows the path of a serious leak from a washing machine on the third floor, which is completely hidden within the wall.



The Global Leader in Infrared Cameras

1 800 464 6372  
[www.flirthermography.com/B2data](http://www.flirthermography.com/B2data)

**FLIR SYSTEMS, BOSTON**  
 Americas Thermography Center  
 16 Esquire Road  
 North Billerica, MA 01862  
 Telephone: +1 (978) 901-8000  
 Toll Free: +1 800 GO-INFRA  
 (1 800 464 6372)

**FLIR SYSTEMS, AB**  
 Worldwide Thermography Center  
 Rinkebyvagen 19  
 SE-182 11  
 Danderyd, SWEDEN  
 Telephone: +46 (0) 8 753 25 00

**FLIR SYSTEMS, LTD**  
 5230 South Service Road, Suite 125  
 Burlington, ON L7L 5K2  
 CANADA  
 Telephone: +1 800 613 0507